

Optex Device Finder User Guide

Ver.1.0.4

Contents

1. Introduction.....	1
1.1. Compatible products	1
1.2. Software Requirements.....	1
2. How to use Optex Device Finder.....	2

1. Introduction

In this document, we will explain how to use “Optex Device Finder”. Using this software, you can search Optex products in the same network.

1.1. Compatible products

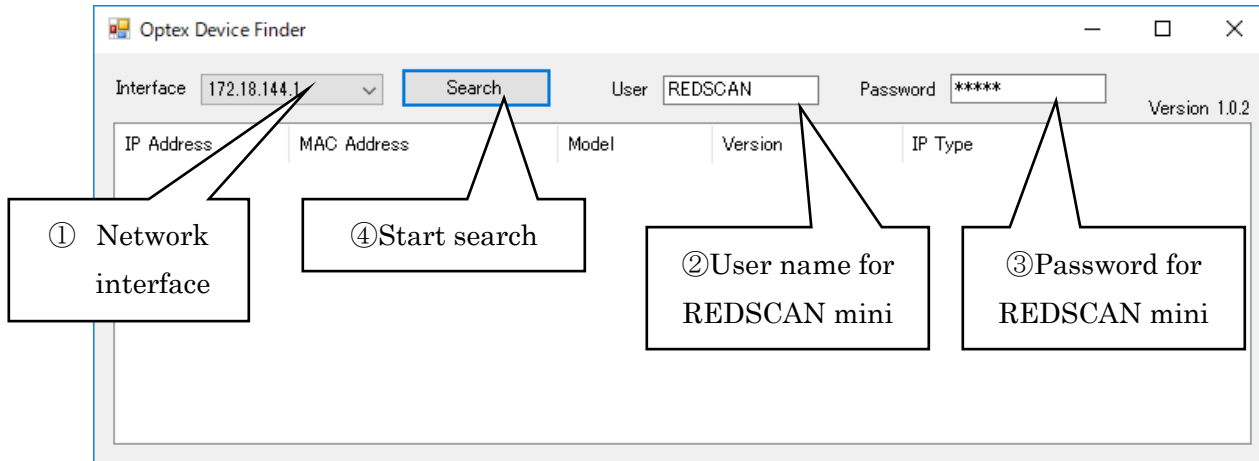
- RLS-2020 Version 2.1.0 or later.

1.2. Software Requirements

- .Net Framework 4.5 or later.

2. How to use Optex Device Finder

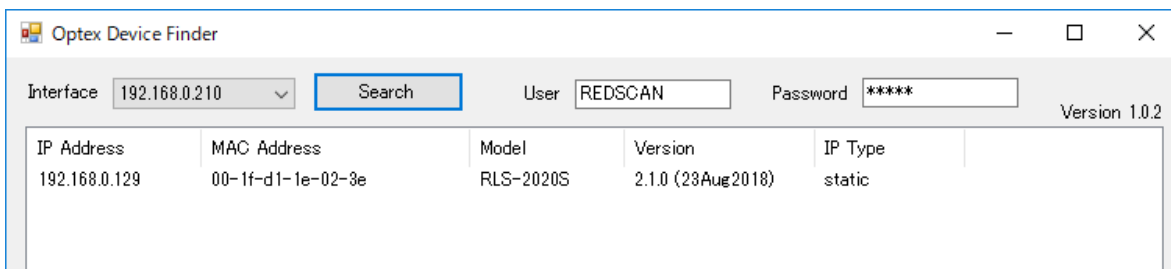
1. Start the Optex Device Finder.



Optex Device Finder.

- 1 Select network interface if you have multiple interfaces.
- 2 Change the text if you changed the user name for WEB page of REDSCAN mini.
- 3 Change the text if you changed the password for WEB page of REDSCAN mini.
- 4 Click “search” button.
- 5 Search result is shown in the list view.

Result:



To open top page of the device, double click the IP Address. Chrome browser will start and open the WEB page.